



<b>Engine</b>	YC4A105-T311
<b>Gross Power</b>	70 kW ( 93 hp / 95 ps) @ 2,200 rpm
<b>Net Power</b>	68 kW ( 91.2 hp / 92.4 ps ) @ 2,200 rpm
<b>Maximum Speed</b>	44 km/h
<b>Standard Loader Bucket Capacity</b>	1.0 m <sup>3</sup>
<b>Standard Backhoe Bucket Capacity</b>	0.2 m <sup>3</sup>
<b>Operating Weight</b>	8,300 kg

# 764A BACKHOE LOADER

TOUGH WORLD. TOUGH EQUIPMENT.



# 764A SPECIFICATIONS >>>

ENGINE	
Emission Regulation	Stage III
Manufacturer	Yuchai
Model	YC4A105-T311
Gross Power	70 kW (93 hp / 95 ps) @ 2,200 rpm
Net Power	68 kW (91.2 hp / 92.4 ps) @ 2,200 rpm
Peak Torque	430 N · m @ 1,500 rpm
Displacement	4.837 L

ELECTRICAL SYSTEM	
System Voltage	12 V
Battery Rating	95 amp - hr

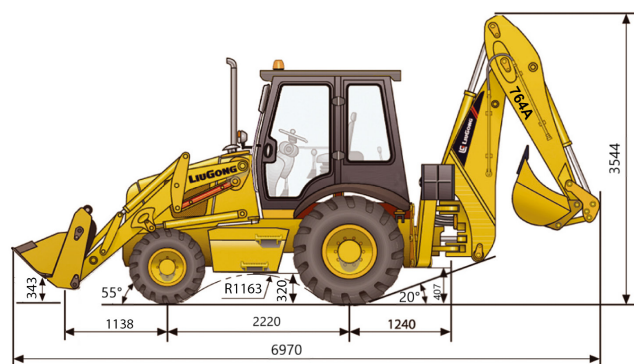
DRIVE TRAIN	
Number of Drive Wheels	4WD
1st Maximum Speed, fwd/rev	9.8 / 12.7 km/h
2nd Maximum Speed, fwd/rev	17.5 / 36 km/h
3rd Maximum Speed, fwd	28 km/h
4nd Maximum Speed, fwd	44 km/h
Turning Radius Outside of Front Tire	4,800 mm

BRAKES	
Service Brake Type	Dry
Service Brake Actuation	Air over hydraulic

TIRES	
Front Tire Size	14-17.5NHS 14PR
Rear Tire Size	16/70-24 14PR

HYDRAULIC SYSTEM	
Circuit Type	Open
Total Flow	122 L/min
Main Relief Pressure	21.5 Mpa
Pump Type	Tandem gear pump
Steering Type	2 WS

OPERATING WEIGHTS	
Operating Weight	8,300 kg

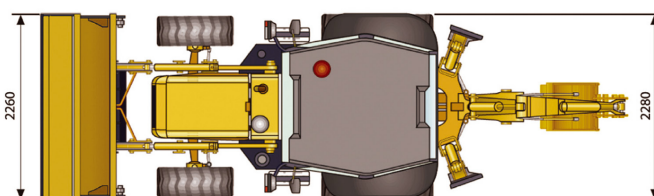


LOADER PERFORMANCE	
Standard Bucket Type (referenced)	General purpose
Heaped Capacity ISO (referenced)	1.0 m <sup>3</sup>
Standard Bucket Width (referenced)	2,260 mm
Lift Capacity at Full Height	27.1 kN
Bucket Breakout Force	52 kN
Maximum Dump Angle at Full Height	45°
Dump Height at Maximum Angle	2,691 mm
Dump Reach at Full Height Discharge	713 mm
Boom Lift Capacity, end, at ground	42.4 kN
Maximum Dig Depth	59 mm

BACKHOE PERFORMANCE	
Heaped Capacity ISO (referenced)	0.2 m <sup>3</sup>
Standard Bucket Width (referenced)	610 mm
Maximum Dig Depth	4,406 mm
Reach From Swing Pivot at Ground	5,443 mm
Turning Angle of Bucket	186°
Bucket Digging Force	52.1 kN
Dipper Digging Force, standard stick	33.6 kN
Loading Height	3,586 mm
Loading Reach from Swing Pivot	3,007 mm

SERVICE CAPACITIES	
Fuel Tank	142 L
Engine Oil	12 L
Cooling System	23 L
Hydraulic Reservoir	130 L
Hydraulic System Total	170 L
Transmission and Torque Converter	38 L
Axle, front	6.9 L
Axle, rear	9+3.5*2 L

STANDARD EQUIPMENT	OPTIONAL EQUIPMENT
Yuchai Engine	Rotary Beacon
Shantui Transmission	
Enclosed Cab with ROBS&FOPS, AC	
Feicheng Rear Drive Axles	
Feicheng Front Drive Axles	
Boom Interlock	
General Purpose Bucket 1.0 / 0.2 m <sup>3</sup>	



Unit: mm

Guangxi Liugong Machinery Co., Ltd.

No. 1 Liutai Road, Liuzhou, Guangxi 545007, PR China  
T: +86 772 3886124 E: overseas@liugong.com  
www.liugong.com

Specifications and designs are subject to change without notice. Machines shown may include optional equipment. Liugong standard and optional equipment may vary from region to region. Please consult your Liugong dealer for information specific to your area. Engine power kW is converted to horsepower (1 kW=1.3596 ps and 1 kW=1.3410 hp) in this file.

01/2025 Designed by Liugong  
Replace the previous versions of 12/2024